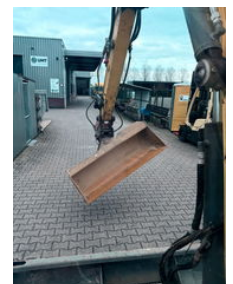
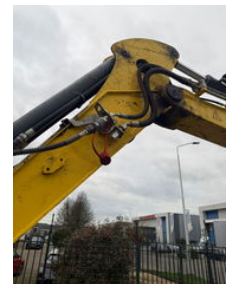
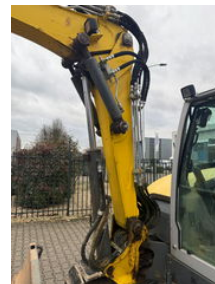


WACKER NEUSON ET65

General features

Brand	WACKER NEUSON
Subcategory	Crawler excavator
Construction year	2016
Operating hours	3301
Condition	Used
Fuel	Diesel
ceMarking	Yes



Characteristics

Empty weight 6.746kg

Serial number WNCE1401KPAL00610

WACKER NEUSON ET65

Description

The Wacker Neuson ET65 combines power, efficiency and versatility in one compact machine. Perfect for challenging jobs in confined spaces. Key specifications: Engine: Powerful 48.5 kW (66 hp) Stage V diesel engine Digging depth: Max. 4,113 mm Working weight: 6,500 kg Width: 2,000 mm Rear swing radius: 1,170 mm Hydraulic performance: Up to 151 l/min for powerful and precise movements Cab: Comfortable and ergonomic with excellent visibility and advanced controls With the ET65, you enjoy powerful performance, a wide range of attachments and low operating costs. Request a quote now and experience the Wacker Neuson ET65 for yourself

Accessories