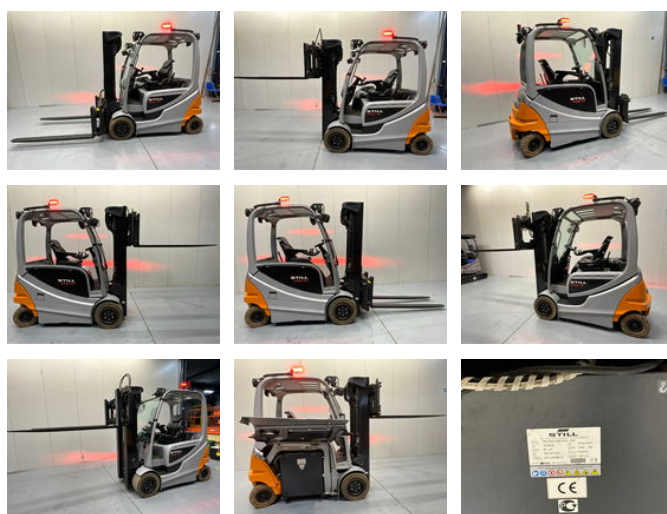


Still RX60-30

General features

| | |
|-------------------|----------|
| Brand | Still |
| Subcategory | Forklift |
| Construction year | 2019 |
| Hourmeter reading | 8026 |
| Condition | Used |
| Reference | V3053 |



Characteristics

| | |
|------------------|---------|
| Empty weight | 5.452kg |
| Length | 420cm |
| Width | 120cm |
| Cabin | Open |
| Lifting capacity | 3.000kg |
| Lifting height | 4.810mm |
| Mast type | Triplex |

Clearance height

2.300mm

Still RX60-30

Description

Red line lighting on the side - blue spotlights at the front and rear

Accessories