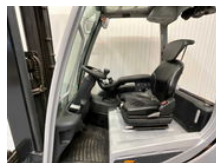


Still RX20-20

General features

Brand	Still
Subcategory	Forklift
Construction year	2019
Condition	Used
Reference	V3049



Characteristics

Empty weight	3.804kg
Length	320cm
Width	120cm
Lifting capacity	2.000kg
Lifting height	5.600mm
Mast type	Triplex
Clearance height	2.460mm

Still RX20-20

Description

Acoustic warning signal; 4th function; for non-marking tires, blue spot

Accessories