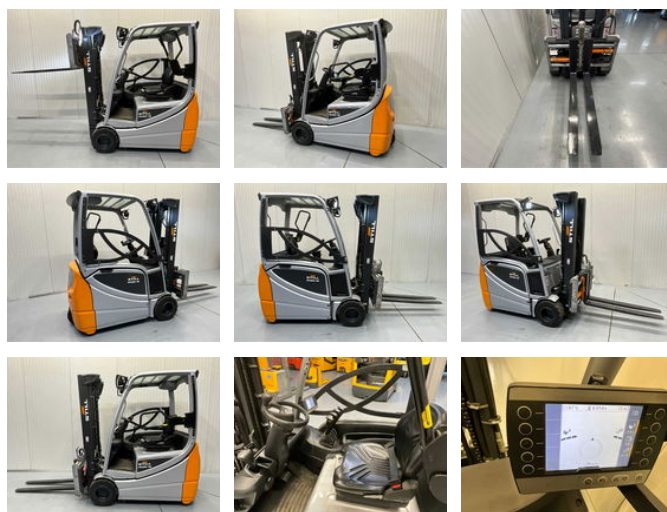


## Still RX20-18

### General features

Brand	Still
Subcategory	Forklift
Construction year	2019
Hourmeter reading	6016
Condition	Used
Reference	V3057



### Characteristics

Length	330cm
Width	120cm
Lifting capacity	1.800kg
Lifting height	4.470mm
Mast type	Triplex
Clearance height	2.100mm



Still RX20-18

Accessories