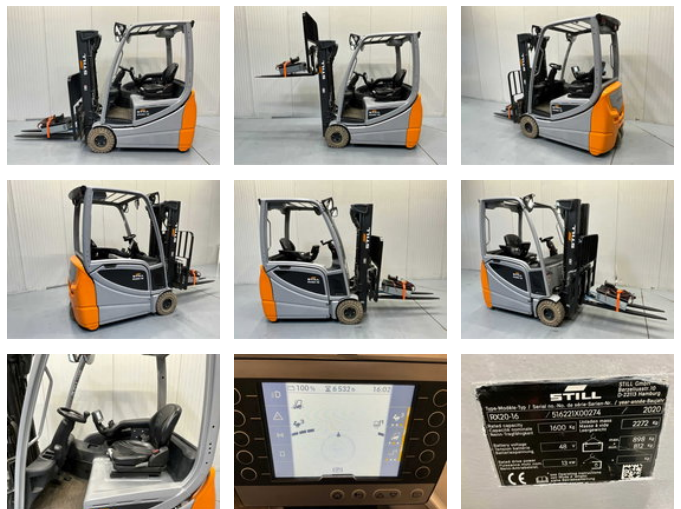


Still RX20-16

General features

Brand	Still
Subcategory	Forklift
Construction year	2020
Hourmeter reading	6532
Condition	Used
Reference	V3060



Characteristics

Empty weight	3.170kg
Length	320cm
Width	120cm
Lifting capacity	1.600kg
Lifting height	432cm
Mast type	Triplex
Clearance height	210cm

Still RX20-16

Description

Rear warning signal, automatic battery charging system, 4th function

Accessories