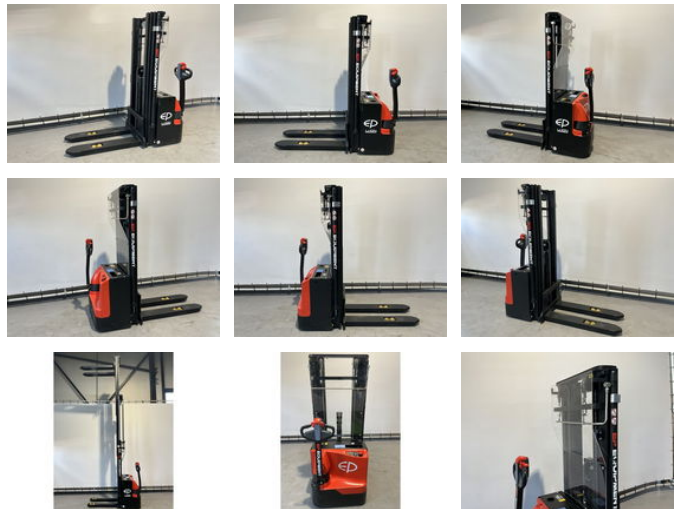


## Ep WSA161 stapelaar hefhoogte 5,0 meter

### General features

Brand	Ep
Subcategory	Pallet stacker
Construction year	2024
General condition	Very good
Fuel	Electric
Reference	142
ceMarking	Yes



### Characteristics

Empty weight	940kg
Load capacity	1.600kg
Length	187cm
Width	80cm
Lifting capacity	1.600kg
Lifting height	5.000mm
Mast type	mastType.slide

# Ep WSA161 stapelaar hefhoogte 5,0 meter

## Description

The WSA161 electric stacker is an efficient and durable solution for warehouse and storage areas. With a capacity of 1600 kg and a maximum lifting height of 5500 mm, this stacker is suitable for moving heavy loads at greater heights. The electric drive ensures quiet and emission-free operation, ideal for use in controlled environments. The ergonomically designed steering wheel and proportional lift ensure safe and easy operation. The WSA161 is a reliable choice for improving efficiency and productivity in your warehouse. WSA161 features The stacker with the highest reach and most options; Features high-quality components; Has a maintenance-free Lithium-ion battery; Is very stable even in high places. Fast charging time of only 2.5 hours !

## Accessories