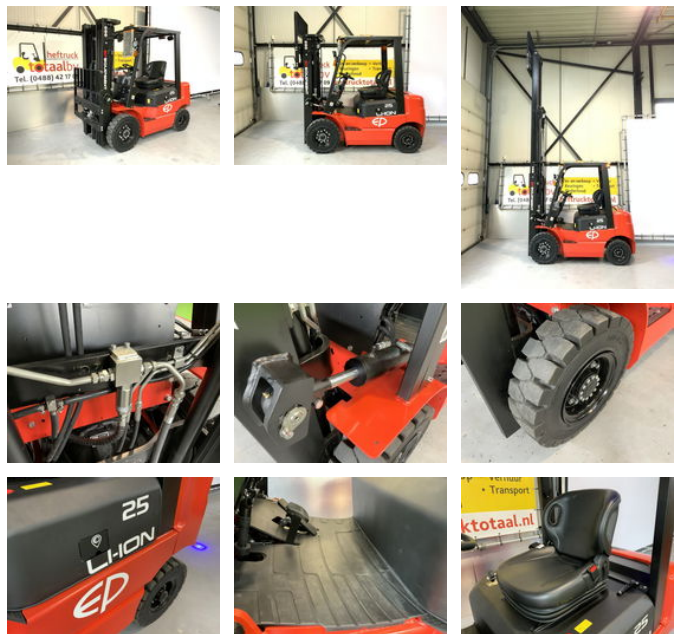


Ep EFL252 Li-Ion hefhoogte 4,80 meter

General features

Brand	Ep
Subcategory	Forklift
Construction year	2024
General condition	Very good
Fuel	Electric
Reference	112
ceMarking	Yes



Characteristics

Empty weight	3.830kg
Length	250cm
Width	115cm
Cabin	Open
Lifting capacity	2.500kg

Lifting height	480cm
Mast type	Triplex
Clearance height	2.150mm

Ep EFL252 Li-Ion hefhoogte 4,80 meter

Technical specifications

Drive

wheels

Description

New EP EFL252. With LI-ION battery and charger. triplomast 4,8m and clearance height 2,15m, sideshift and 4th function ! With 1,2m forks. including 5 years warranty on the battery and 1 year on the truck ! - Battery included - Reverse alarm - Emergency stop - Sliding device - Solid rubber tires - Fork positioner - Working lights - Side shifter - Flashing light

Accessories