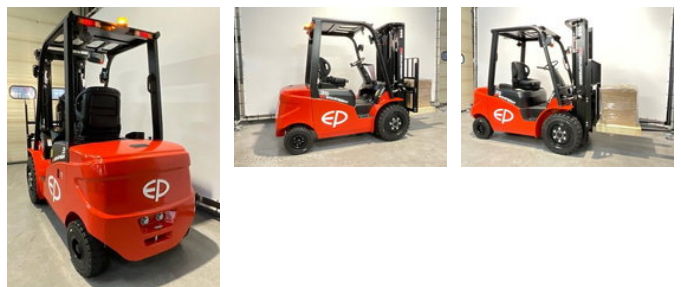
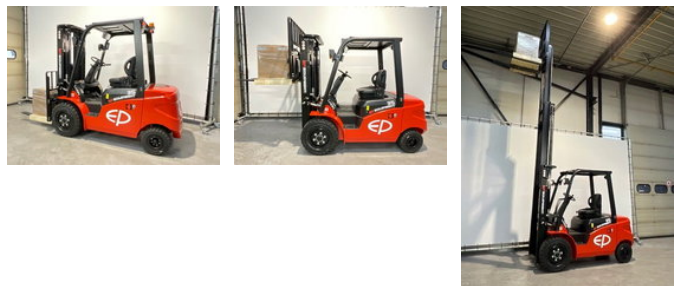


Ep EFL 353 li-ion met een hefhoogte van 4,80m

General features

Brand	Ep
Subcategory	Forklift
Construction year	2026
Color	Red
General condition	Very good
Fuel	Electric
CE marking	Yes



Characteristics

Empty weight	5.000kg
Length	265cm
Width	120cm

Cabin	Open
Serial number	1311808550
Lifting capacity	3.500kg
Lifting height	4.800mm
Mast type	Triplex

Ep EFL 353 li-ion met een hefhoogte van 4,80m

Accessories