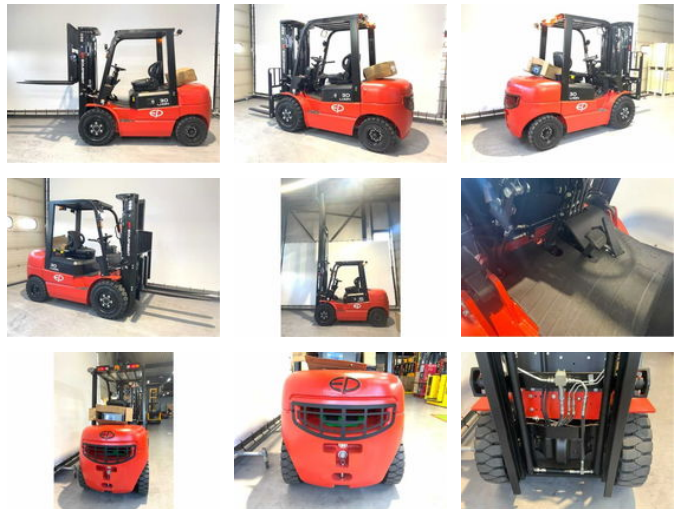


# Ep EFL 302 (3000KG)

## General features

Brand	Ep
Subcategory	Forklift
Construction year	2025
General condition	Very good
Fuel	Electric
CE marking	Yes



## Characteristics

Empty weight	4.080kg
Lifting capacity	3.000kg
Lifting height	4.800mm
Mast type	Triplex

# Ep EFL 302 (3000KG)

## Description

The EFL 302 The EFL 302 forklift is an electric forklift built in the chassis of the old familiar internal combustion engine. This robust forklift with a lifting capacity of 3,000 kg is ideally suited for both indoor and outdoor use. By replacing the combustion engine for a 205 AH Li-Ion battery, this machine can be used well both indoors and outdoors. The large wheels, strong chassis and complete lift truck is a good replacement for the traditional combustion lift truck. This forklift can also be used well on construction sites. EFL 302 features Has the chassis of a diesel truck Suitable for indoor and outdoor use Has a maintenance-free lithium-ion battery Built-in charger for flexible use

## Accessories