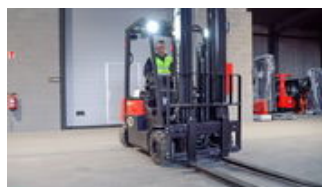
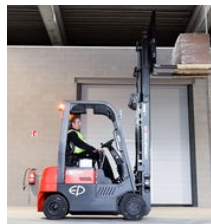


Ep CPD18FVL elektrische heftruck (1.800 kg)

General features

| | |
|-------------------|-----------|
| Brand | Ep |
| Subcategory | Forklift |
| Construction year | 2025 |
| Color | Red |
| General condition | Very good |
| Fuel | Electric |
| CE marking | Yes |



Characteristics

| | |
|------------------|---------|
| Empty weight | 3.160kg |
| Cabin | Open |
| Lifting capacity | 1.800kg |
| Lifting height | 4.800mm |
| Mast type | Triplex |

Ep CPD18FVL elektrische heftruck (1.800 kg)

Description

The CPD18FVL is a 3-wheel forklift with a lifting capacity of 1.8 tonnes. Its compact size and manoeuvrable turning radius make it ideal for use in confined spaces such as moving goods on pallets or in containers. It can move loads of up to 1,800 kg and reach a lifting height of up to 4.8 metres. This forklift is simple, efficient and reliable to use. Compact and manoeuvrable The compact FVL series has a small turning radius, 1680 mm for the CPD18FVL, ensuring excellent manoeuvrability in tight spaces. Reinforced mast for stability The FVL series has an extra strong mast from the CPD20L2, giving you optimal visibility and good stability. Even when fully loaded, the mast remains firm and stable without wobbling. 80V Li-Ion battery technology This modern battery not only offers efficiency and long operating time, but can also be recharged in between. Ideal for a flexible working day without interruptions. Maintenance-free battery No more hassle with air filters, oil filters or starter batteries. Easily charge at your convenience and keep your work schedule intact. Smart safety strategies Thanks to the Battery Management System (BMS), you always stay operational, even in case of unexpected battery problems. With this truck, you will always drive safely back to the workshop. Multi-purpose charging options With an 80V/205Ah Li-Ion battery and an 80V/35A integrated charger, this forklift is ready for continuous operation. It is also possible to charge the battery on an interim basis. The EP-developed Li-Ion battery, equipped with CAN and BMS, ensures optimum ease of use. Proven quality Built with quality components, the CPD18FVL's robust construction ensures a long service life. Invest in a forklift that is always there for you!

Accessories